

HITACHI

Hitachi Power Tools France S.A.

PERCEUSES

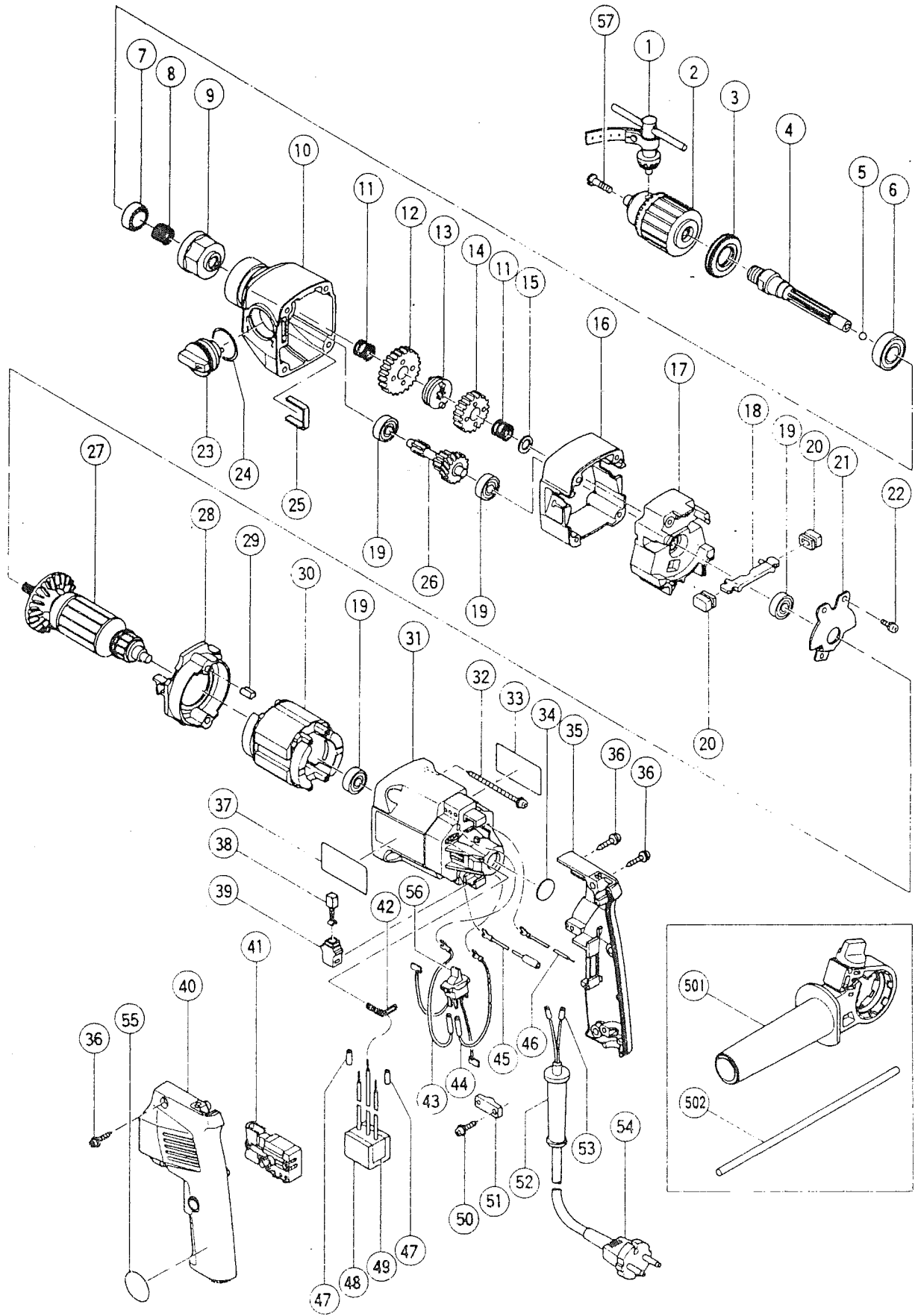
A PERCUSSION

DV 20V2K

DV 20V2KS

DV 20V3

DV 20T



DV 20V2K/DV 20V2KS/DV 20V3/ DV 20T 1/2

| POS. | REFERENCES | DESIGNATIONS | CODES |
|-------|------------|-----------------------------------|-------|
| 3 | 995316 | JOINT | 206 |
| 4 | 994447 | ARBRE DV20V2K/KS | 217 |
| 5 | 959149 | BILLE | 201 |
| 6 | 855226 | ROULEMENT | 211 |
| 7 | 995342 | ROCHET | 212 |
| 8 | 994457 | RESSORT | 203 |
| 9 | 995340 | ROCHET | 216 |
| 10 | 994470 | CARTER PIGNON | 213 |
| 11 | 994389 | RESSORT | 203 |
| 12 | 994383 | ENGRENAGE 1ère VITESSE | 210 |
| 13 | 994388 | COUPLEUR | 210 |
| 14 | 994384 | ENGRENAGE 2ème VITESSE | 210 |
| 15 | 971657 | RONDELLE | 203 |
| 16 | 994441 | COUVERCLE FLASQUE | 207 |
| 17 | 994442 | FLASQUE | 220 |
| 18 | 994444 | LEVIER | 205 |
| 19 | 855284 | ROULEMENT | 211 |
| 20 | 994445 | BOUTON | 204 |
| 21 | 994446 | LOGEMENT DE ROULEMENT | 206 |
| 22 | 993126 | VIS | 203 |
| 23 | 994395 | LEVIER CHANGEMENT DE VITESSE | 206 |
| 24 | 994452 | O-RING | 203 |
| 25 | 994386 | PATTE RESSORT | 203 |
| 26 | 994387 | PIGNON | 219 |
| 27 | 360029G | INDUIT | 226 |
| 28 | 994440 | BAFFLE | 205 |
| 29 | 994343 | CAOUTCHOUC | 203 |
| 30 | 340030G | INDUCTEUR | 215 |
| 31 | 994340 | CARCASSE | 215 |
| 32 | 994391 | VIS | 203 |
| 34 | 994453 | JOINT ROULEMENT | 203 |
| 35/40 | 994509 | POIGNEE COMPLETE DV20T | 216 |
| 35/40 | 994362 | POIGNEE COMPLETE DV20V2K/KS | 216 |
| 35/40 | 994485 | POIGNEE COMPLETE DV20V3 | 216 |
| 36 | 930446 | VIS | 201 |
| 38 | 999041 | JEU DE CHARBONS | 207 |
| 39 | 955203 | PORTE CHARBON | 205 |
| 41 | 971667Z | INTERRUPTEUR DV 20T | 213 |
| 41 | 994393 | INTERRUPTEUR DV20V2K/KS/DV20V3 | 223 |
| 42 | 995323 | CONTACT MASSE | 203 |
| 43 | 994478 | FIL TERMINAL DV20T ET DV20V3 | 204 |
| 43 | 994462 | FIL TERMINAL DV20V2K/KS | 204 |
| 44 | 994477 | FIL TERMINAL DV20T ET DV20V3 | 204 |
| 44 | 994459 | FIL TERMINAL DV20V2K/KS | 204 |
| 45 | 994494 | FIL TERMINAL DV20T | 204 |
| 45 | 994467 | FIL TERMINAL DV20V2K/KS ET DV20V3 | 204 |
| 46 | 994493 | FIL TERMINAL DV20T | 204 |
| 46 | 994466 | FIL TERMINAL DV20V2K/KS ET DV20V3 | 204 |
| 48 | 930153 | SUPPORT | 202 |
| 49 | 994506 | CONDENSATEUR DV20T | 209 |
| 49 | 995326 | CONDENSATEUR DV20V2K/KS ET DV20V3 | 211 |
| 50 | 984750 | VIS | 203 |

DV 20V2K/DV 20V2KS/DV 20V3/ DV 20T 2/2

| POS. | REFERENCES | DESIGNATIONS | CODES |
|------------------------------|------------|-------------------------------------------|-------|
| 51 | 960266 | SERRE CABLE | 203 |
| 52 | 953327 | ENTREE DE CABLE | 203 |
| 54 | 200008 | CABLE | 213 |
| 56 | 994455 | INVERSEUR DV20V2K/KS | 213 |
| 57 | 981122 | VIS DV20V2K | 203 |
| ACCESSOIRES STANDARDS | | | |
| 1 | 930515 | CLE DE MANDRIN | |
| 2 | 950272 | MANDRIN DV20T ET DV20V3 | |
| 2 | 950275 | MANDRIN DV20V2K | |
| 2 | 100186 | MANDRIN AUTO. SPECIAL PERCUSSION DV20V2KS | |
| 501 | 995310 | POIGNEE AUXILIAIRE | |

