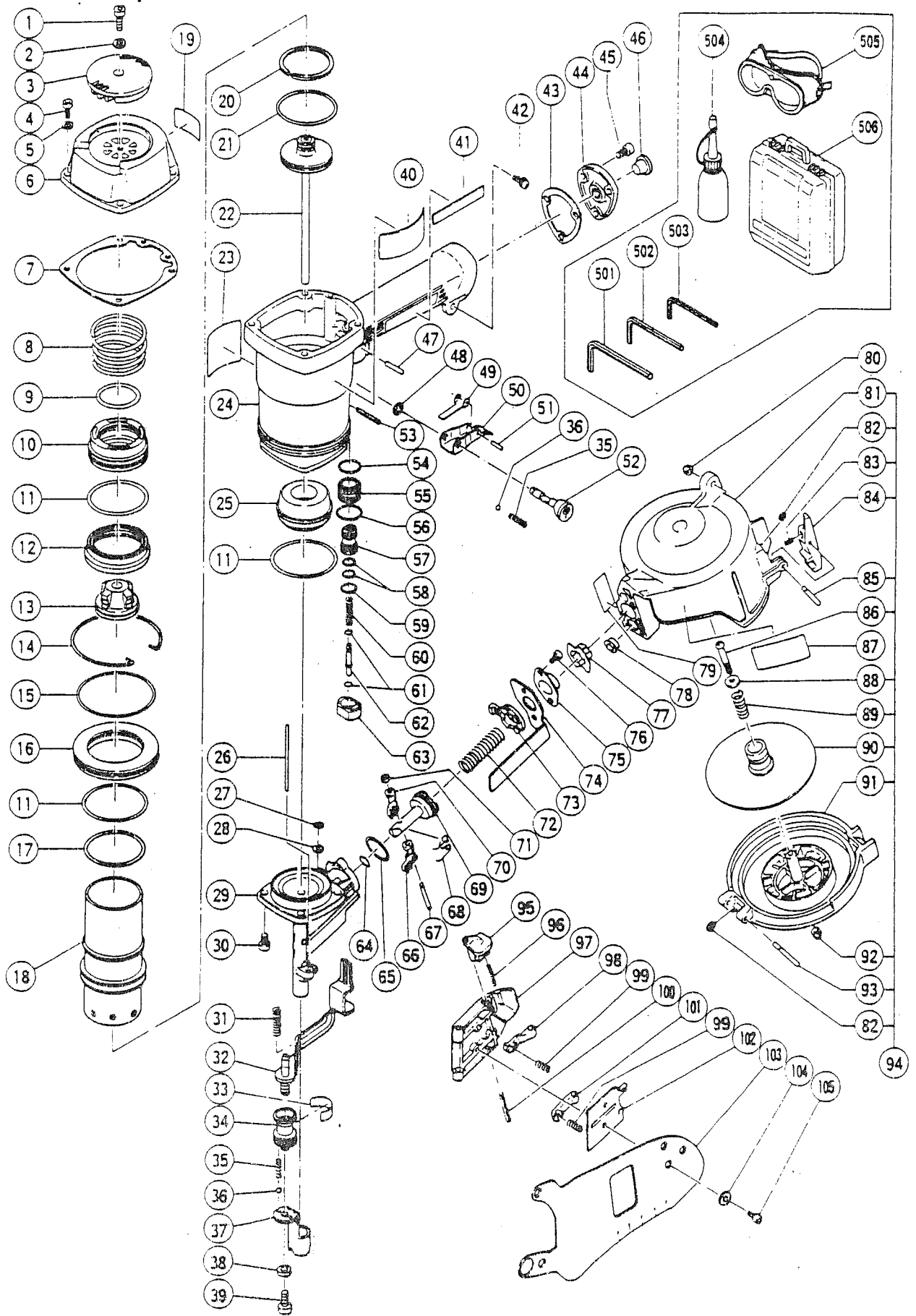


HITACHI

Hitachi Power Tools France S.A.

CLOUEUR

NV-65AD



NV-65AD

| POS. | REFERENCES | DESIGNATIONS | CODES |
|------|------------|--------------------|-------|
| 1 | 949821 | VIS | 202 |
| 2 | 949455 | RONDELLE | 201 |
| 3 | 878914 | PETIT COUVERCLE | 214 |
| 4 | 949652 | VIS | 201 |
| 5 | 949455 | RONDELLE | 201 |
| 6 | 880085 | COUVERCLE | 225 |
| 7 | 878919 | JOINT | 205 |
| 8 | 878912 | RESSORT | 215 |
| 9 | 878913 | O-RING | 204 |
| 10 | 878911 | PLAQUE DE CYLINDRE | 218 |
| 11 | 878372 | O-RING | 205 |
| 12 | 878918 | JOINT CAOUTCHOUC | 210 |
| 13 | 878915 | VALVE CAOUTCHOUC | 214 |
| 14 | 878962 | CLIPS | 205 |
| 15 | 874104 | O-RING | 205 |
| 16 | 878958 | PLAQUE | 215 |
| 17 | 878961 | O-RING | 205 |
| 18 | 878963 | CYLINDRE | 229 |
| 20 | 878931 | BAGUE | 221 |
| 21 | 878932 | O-RING | 203 |
| 22 | 880083 | PISTON | 242 |
| 24 | 880084 | CARCASSE | 239 |
| 25 | 878933 | AMORTISSEUR | 218 |
| 26 | 878936 | TIGE | 209 |
| 27 | 874436 | O-RING | 203 |
| 28 | 878964 | RONDELLE | 204 |
| 29 | 880087 | NEZ | 249 |
| 30 | 878969 | VIS | 204 |
| 31 | 878178 | RESSORT | 204 |
| 32 | 880091 | LEVIER | 237 |
| 34 | 880092 | REGLAGE | 221 |
| 35 | 982454 | RESSORT | 202 |
| 36 | 959155 | BILLE | 201 |
| 37 | 878968 | POUSSOIR | 221 |
| 38 | 880081 | RONDELLE | 203 |
| 39 | 949657 | VIS | 202 |
| 42 | 986274 | VIS | 203 |
| 43 | 877331 | JOINT | 203 |
| 44 | 877367Z | COUVERCLE POIGNEE | 213 |
| 45 | 949658 | VIS | 201 |
| 46 | 872035 | BOUCHON | 203 |
| 47 | 949864 | GOUPILLE | 201 |
| 48 | 955479 | CLIPS | 203 |
| 49 | 878928 | LEVIER | 215 |
| 50 | 878927 | GACHETTE | 215 |
| 51 | 878965 | GOUPILLE | 203 |
| 52 | 880086 | BOUTON | 216 |
| 53 | 949866 | GOUPILLE | 201 |
| 54 | 877699 | O-RING | 203 |
| 55 | 878881 | FOURREAU DE VALVE | 219 |

NV-65AD

| POS. | REFERENCES | DESIGNATIONS | CODES |
|------|------------|-----------------------|-------|
| 56 | 878885 | O-RING | 203 |
| 57 | 878922 | VALVE | 222 |
| 58 | 878925 | O-RING | 203 |
| 59 | 878887 | O-RING | 204 |
| 60 | 878884 | RESSORT | 204 |
| 61 | 878888 | O-RING | 203 |
| 62 | 878923 | PLONGEUR | 220 |
| 63 | 878880 | SUPPORT DE VALVE | 226 |
| 64 | 872645 | O-RING | 204 |
| 65 | 876796 | O-RING | 202 |
| 66 | 880090 | GUIDE | 223 |
| 67 | 878947 | AXE | 215 |
| 68 | 878934 | RESSORT | 212 |
| 69 | 878944 | PETIT PISTON | 223 |
| 71 | 877826 | CLIPS | 205 |
| 72 | 878343 | RESSORT | 204 |
| 73 | 878943 | PIECE | 208 |
| 74 | 880088 | PROTECTION | 212 |
| 75 | 877713 | COUVERCLE | 205 |
| 76 | 949819 | VIS | 201 |
| 77 | 877479 | PALIER | 204 |
| 78 | 877360 | PALIER | 203 |
| 80 | 877371 | ECROU PLASTIQUE | 203 |
| 81 | 878950 | CHARGEUR | 214 |
| 82 | 872971 | CLIPS | 202 |
| 83 | 877149 | RESSORT | 203 |
| 84 | 877151 | VERROUILLAGE CHARGEUR | 204 |
| 85 | 878951 | GOUPILLE | 205 |
| 86 | 949228 | VIS | 201 |
| 88 | 875246 | RONDELLE | 203 |
| 89 | 877894 | RESSORT | 203 |
| 90 | 878350 | SUPPORT DE CLOUS | 210 |
| 91 | 878960 | COUVERCLE CHARGEUR | 210 |
| 92 | 876465 | ECROU PLASTIQUE | 203 |
| 93 | 878953 | GOUPILLE | 206 |
| 94 | 878949 | CHARGEUR COMPLET | 228 |
| 95 | 880145 | BLOCAGE GUIDE | 218 |
| 96 | 880446 | RESSORT | 204 |
| 97 | 878937 | GUIDE CLOUS | 234 |
| 98 | 878938 | STOPPEUR | 218 |
| 99 | 878940 | RESSORT | 204 |
| 100 | 949900 | GOUPILLE | 201 |
| 101 | 878939 | STOPPEUR | 217 |
| 102 | 878941 | COUVERCLE | 209 |
| 103 | 878942 | COUVERCLE | 209 |
| 104 | 978337 | ENTRETOISE | 205 |
| 105 | 878356 | VIS | 203 |
| 107 | 880093 | GOUPILLE | 203 |

NV-65AD

| POS. | REFERENCES | DESIGNATIONS | CODES |
|------------------------------|------------|------------------------|-------|
| ACCESSOIRES STANDARDS | | | |
| 501 | 944459 | CLE SIX PANS 5 mm | |
| 502 | 944458 | CLE SIX PANS 4 mm | |
| 503 | 943277 | CLE SIX PANS 3 mm | |
| 504 | 877153 | HUILE 30 cc | |
| 505 | 875769 | LUNETTES DE PROTECTION | |
| 506 | 878967 | COFFRET | |