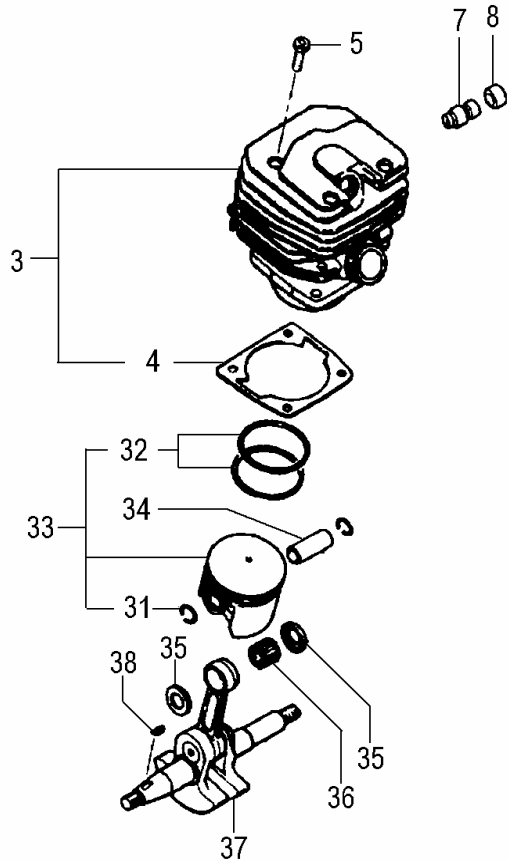


ITEM N°	CODE N°	DESCRIPTION	N° Used	x	x	x	x	x	x	x
		MODEL : CS 40EM / CS 45EM								0
		C23-01 CYLINDER/PISTON/CRANK								
022	735-04093-20	MUFFLER COVER #	1							
023	691-32625-20	SPECIAL SCREW M5X10	2							
024	726-04093-20	MUFFLER NUT	2							
		C23-06 RECOIL STARTER								
000	756-04093-90	RECOIL STARTER ASS'Y #	1							
001	112-04093-80	FAN CASE COMP. #	1							
002	780-04093-20	ROPE GUIDE	1							
003	783-04093-20	STARTER ROPE #	1							
004	785-04093-20	STARTER HANDLE #	1							
005	795-04093-20	ROPE STOPPER	1							
006	778-04093-90	RECOIL SPRING CASE ASS'Y #	1							
007	193-32625-20	H.L GUIDE #	1							
008	774-04093-20	STARTER ROPE REEL #	1							
009	787-04093-20	STARTER BOSS #	1							
010	786-04093-20	STARTER WASHER	1							
011	690-32625-20	SPECIAL SCREW M5X20	1							
015	683-32625-20	SPECIAL SCREW M5X14	4							
		C23-07 CARBURETOR								
000	455-25330-91	CARBURETOR ASS'Y	1							
002	578-25007-20	INLET SCREEN	1							
003	575-25330-80	PUMP BODY #	1							
004	514-25001-20	SET SCREW	1							
005	577-25007-20	PUMP GASKET	1							
006	576-25330-20	PUMP DIAPHRAGM #	1							
007	603-25012-20	NEEDLE VALVE #	1							
008	475-25038-20	DIAPHRAGM GASKET	1							
009	474-25001-80	METERING DIAPHRAGM COMP. #	1							
010	476-25004-20	DIAPHRAGM COVER	1							
011	477-25080-20	VALVE SPRING	1							
012	546-25001-20	HINGE PIN SET SCREW	1							
013	605-25001-20	HINGE PIN	1							
015	496-25032-20	CHOKE SPRING	1							
016	567-25032-20	STEEL BALL	1							
018	473-25001-20	VALVE HINGE	1							
022	463-25006-20	IDLE ADJUST SPRING	1							
023	462-25330-20	IDLE ADJUST SCREW #	1							
026	548-25012-20	SET SCREW	4							
		C23-08 CLEANER COVER								
001	452-04093-90	CLEANER COVER ASS'Y #	1							
002	175-32625-20	CLEANER KNOB #	1							
003	418-04093-20	CLEANER PACKING	1							
005	428-04093-80	FILTER SCREEN #	1							
006	444-04093-20	CLEANER ELEMENT A	1							
007	993-11041-012	TAPPING SCREW 4X10	1							
008	486-04093-20	RUBBER CAP	1							
010	016-04093-90	CYLINDER COVER ASS'Y #	1							
011	683-32625-20	SPECIAL SCREW M5X14	5							
012	213-32625-80	HANDLE DAMPER COMP. #	1							
013	381-04093-20	SPECIAL NUT #	1							
014	191-32625-20	GROMMET	1							
025	420-04093-80	CLEANER ELEMENT COMP. #	1							
		C23-09 SIDE CASE/CHAIN BAKE								
020	040-32625-90	SIDE CASE ASS'Y #	1							

ITEM N°	CODE N°	DESCRIPTION	N° Used	x	x	x	x	x	x	x
		MODEL : CS 40EM / CS 45EM								0
		C23-01 CYLINDER/PISTON/CRANK								
021	803-32625-20	HAND GUARD SHAFT #	1							
022	039-32625-80	SIDE CASE COMP. #	1							
023	287-32625-20	STOPPER C #	1							
024	116-32625-20	CHAIN TENSION BOLT #	1							
026	115-32625-20	TENSION ADJUSTING BOSS #	1							
027	462-32625-20	GUIDE PLATE B #	1							
028	300-32625-20	GEAR #	1							
030	467-32625-20	GUIDE	1							
031	325-32625-20	CHAIN PROTECTOR #	1							
035	805-32625-90	FRONT HAND GUARD ASS'Y #	1							
036	499-32626-20	SPRING PIN	1							
037	860-32625-20	STOP RING E	1							
038	809-32625-20	WEIGHT SPRING	1							
039	808-32625-20	HAND GUARD WE/GHT #	1							
040	804-32625-20	HAND GUARD SPRING #	1							
041	513-32625-20	WASHER	1							
042	859-32625-20	STOP RING E	2							
043	802-32625-20	SPACER	1							
044	811-32625-20	PIN #	1							
045	373-32625-20	BRAKE ARM #	1							
046	374-32625-20	BRAKE SPRING #	1							
047	374-32626-20	BRAKE SPRING #	1							
048	386-32625-20	BRAKE LINK SUPPORT #	1							
049	384-32625-20	COLLAR	1							
051	379-32625-80	BRAKE LINK COMP. #	1							
052	375-32625-20	BRAKE LINK COVER #	1							
053	376-32625-20	BRAKE BAND HOLDER	1							
054	378-32625-20	BRAKE BAND #	1							
055	695-32625-20	SPECIAL SCREW M4X12	5							
		C23-10 HANDLE								
001	687-32625-20	SPECIAL SCREW M5X19	1							
002	227-32625-20	REAR HANDLE GRIP #	1							
003	257-32625-20	SAFTY LEVER	1							
005	493-32625-20	GROMMET	1							
006	490-32625-20	THROTTLE ROD #	1							
011	209-32625-80	FRONT HANDLE COMP. #	1							
012	693-32625-20	SPECIAL BOLT	1							
013	687-32625-20	SPECIAL SCREW M5X19	1							
016	436-04093-80	AIR CLEANER BASE COMP. #	1							
017	223-32625-80	REAR DAMPER COMP. #	2							
018	295-32625-20	DAMPER SET BOLT A #	2							
019	265-32625-20	DAMPER CAP B	2							
020	426-32625-20	CLIP B	1							
021	565-04093-20	AIR VENT PIPE	1							
022	699-04093-91	FUEL PIPE ASS'Y #	1							
023	702-32625-90	FUEL PIPE ASS'Y	1							
024	478-32625-20	COLLAR #	1							
025	675-04093-90	PUMP FILTER BODY ASS'Y #	1							
030	599-04093-20	CUSHION RUBBER #	1							
031	692-32625-20	SPECIAL SCREW M5X52	2							
035	635-32625-90	TANK CAP ASS'Y #	1							
037	630-32625-20	TANK CAP PACKING	1							
040	715-32625-20	GUIDE	1							

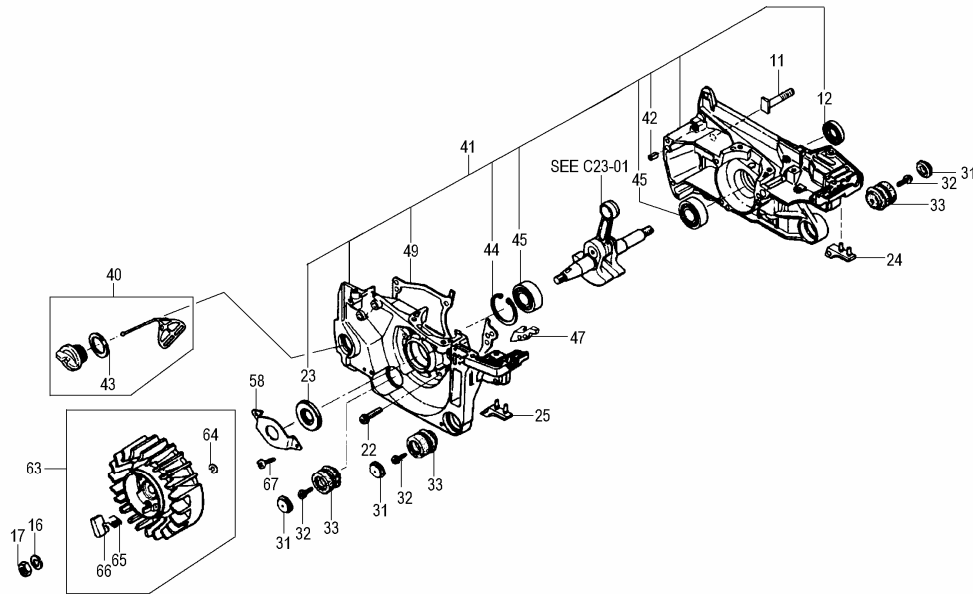
ITEM N°	CODE N°	DESCRIPTION	N° Used	x	x	x	x	x	x	x
		MODEL : CS 40EM / CS 45EM							0	
		C23-01 CYLINDER/PISTON/CRANK								
041	706-32625-80	CHOKE ROD COMP.	1							
042	707-32625-21	CHOKE ROD RUBBER	1							
045	646-32625-90	AIR VENT VALVE ASS'Y #	1							
055	012-32626-90	REAR HANDLE ASS'Y	1							
059	232-32625-20	FRONT DAMPER	1							
060	694-32625-20	SPECIAL SCREW M4X16	1							
061	423-32625-20	PACKING	1							
062	060-32625-20	THROTTLE LEVER	1							
063	061-32625-20	THROTTLE LEVER SPRING	1							
064	499-32625-20	SPRING PIN	1							
065	052-32626-20	GROMMET A	1							
		C23-11 COVER/CHAIN/CHAIN BAR/								
001	107-32625-20	CHAIN BAR 16	1							
002	105-72830-20	CHAIN BAR 18 #	1							
010	138-32625-20	BAR CHAIN 0.325 16 ,21BP-66E #	1							
011	136-32578-20	BAR CHAIN 0.325 18 ,21BP-72E #	1							
020	947-3281A-20	CHAIN CAOVER 16	1							
021	942-3257B-20	CHAIN COVER 450MM #	1							
050	880-32625-20	DRIVER #	1							
051	883-32625-20	COMBI.SPANNER #	1							
		C23-12 DECALS								
001	906-72832-20	NAME PLATE HITACHI	1							
002	909-32625-22	CAUTION MARK	1							
003	915-72832-20	STARTER MARK CS45EM	1							
004		STARTER MARK CS40EM	1							

C23-01 CS40EM/45EM CYLINDER/PISTON/CRANK SHAFT



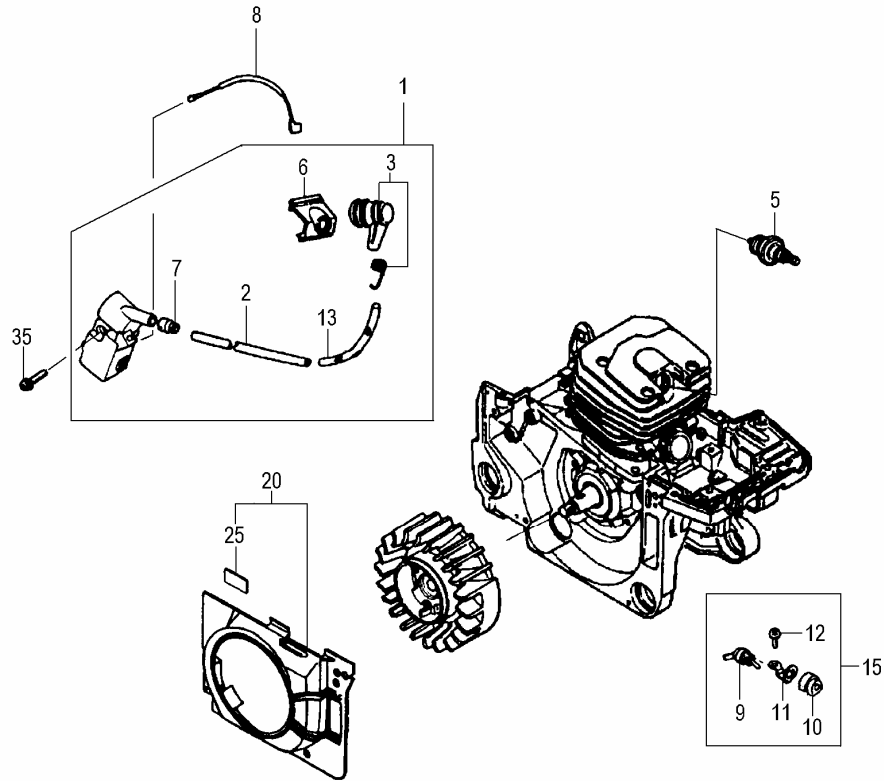
REF. NUMBER	PARTS NUMBER	DESCRIPTION	Q'TY	SERIAL NUMBER
003	001-04093-90	CYLINDER SET #	1	
004	017-04093-20	CYLINDER GASKET #	1	
005	684-32625-20	SPECIAL SCREW M5X20	4	
007	004-04093-80	DECOMPRESSION COMP.	1	
008	020-04093-20	DECOMP COVER	1	
031	039-04093-20	PISTON PIN CIRCLIP	2	
032	041-04093-20	PISTONRING #	2	
033	030-04093-90	PISTON SET #	1	
034	037-04093-20	PISTON PIN #	1	
035	036-04093-20	PISTON PIN COLLAR #	2	
036	999-62111-581	NEEDLE BEARING #	1	
037	046-04093-80	CRANK SHAFT COMP. #	1	
038	068-04093-20	WOOD -RUFF KEY #	1	

C23-02 CS40EM/45EM CRANK CASE



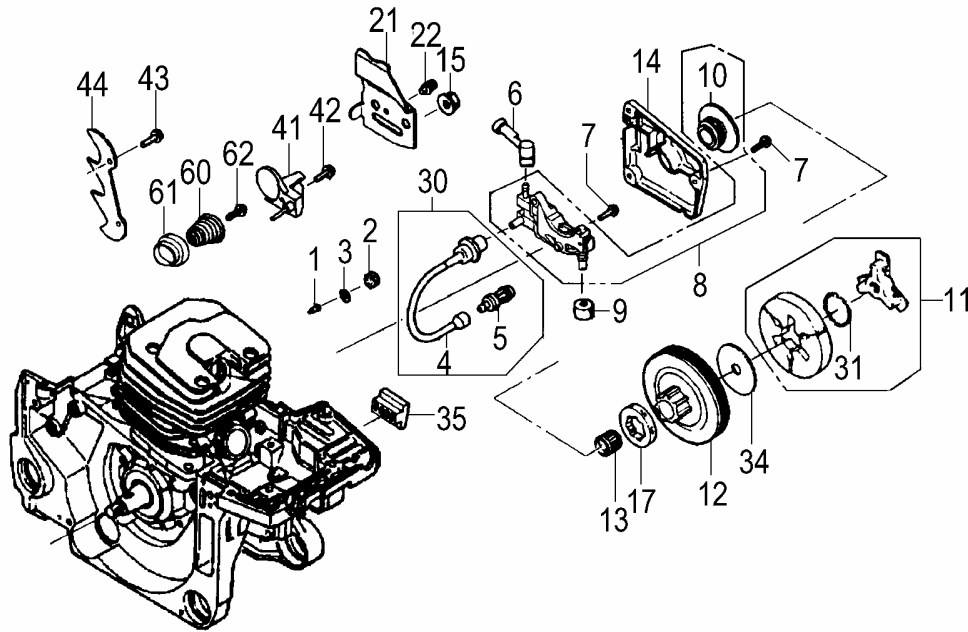
REF. NUMBER	PARTS NUMBER	DESCRIPTION	Q'TY	SERIAL NUMBER
011	101-32625-20	BAR TIGHTENING BOLT	# 2	
012	999-66152-874	OIL SEAL ISD15284.5	# 1	
016	065-04093-20	FLY WHEEL WASHER	1	
017	066-04093-20	FLY WHEEL NUT	1	
022	685-32625-20	SPECIAL SCREW M5X25	5	
023	999-66153-572	OIL SEAL ISCD 15354.5	# 1	
024	285-32625-20	STOPPER A	# 1	
025	286-32625-20	STOPPER B	# 1	
031	224-32625-20	DAMPER CAP A	3	
032	688-32625-20	SPECIAL SCREW M5X16	3	
033	219-32625-80	FRONT DAMPER COMP.	3	
040	642-32625-90	OIL TANK CAP ASS'Y	# 1	
041	072-04093-90	CRANK CASE ASS'Y	# 1	
042	081-04093-20	PIN	3	
043	523-32625-20	OIL TANK CAP PACKING	1	
044	029-32625-20	STOP RING C,INNER	1	
045	089-04093-80	BEARING	# 2	
047	192-32625-20	H.L GROMMET	# 1	
049	090-04093-20	CRANK CASE GASKET	# 1	
058	466-32625-20	PLATE	# 1	
063	155-04093-90	MAGNETO ROTOR ASS'Y	1	
064	859-32625-20	STOP RING E	2	
065	790-04093-20	PAWL SPRING	# 2	
066	788-04093-20	STARTER PAWL	2	
067	994-16040-101	SCREW 4X10/WS	2	

C23-03 CS40EM/45EM IGNITION SYSTEM



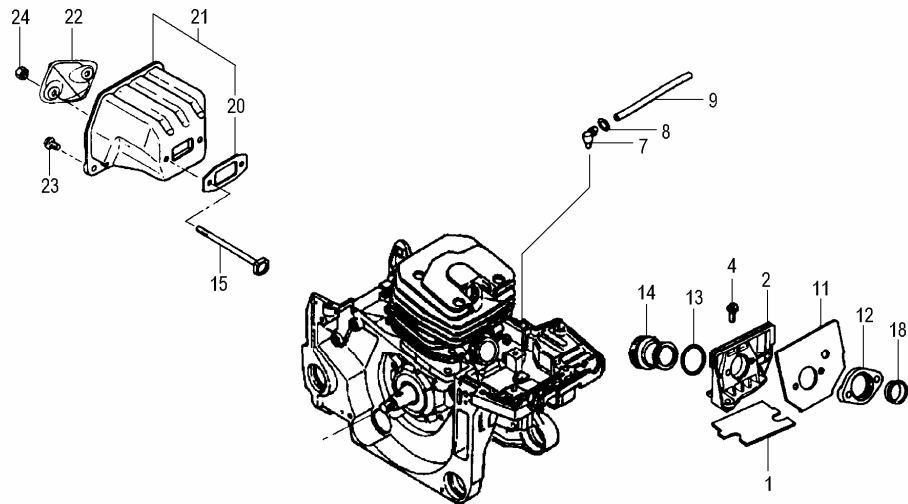
REF. NUMBER	PARTS NUMBER	DESCRIPTION	Q'TY	SERIAL NUMBER
001	153-04093-90	IGNITION COIL ASS'Y #	1	
002	178-04093-20	CORD #	1	
003	157-04093-90	PLUG CAP ASS'Y #	1	
005	018-04093-20	SPARK PLUG RCJ6Y #	1	
006	255-04093-20	SPARK PLUG COVER #	1	
007	485-04093-20	RUBBER CAP #	1	
008	179-04093-80	STOP CORD #	1	
009	170-04093-80	STOP SWITCH COMP. #	1	
010	266-04093-20	STOP BUTTON COVER	1	
011	640-04093-20	STOP BUTTON STAY #	1	
012	691-32625-20	SPECIAL SCREW M5X10	1	
013	250-04093-20	INSULATOR TUBE #	1	
015	162-04093-90	STOP SWITCH ASS'Y #	1	
020	145-04093-80	AIR DEFLECTOR #	1	
025	240-32625-20	DAMPER SEAT #	1	
035	690-32625-20	SPECIAL SCREW M5X20	2	

C23-04 CS40EM/45EM CLUTCH/OIL PUMP



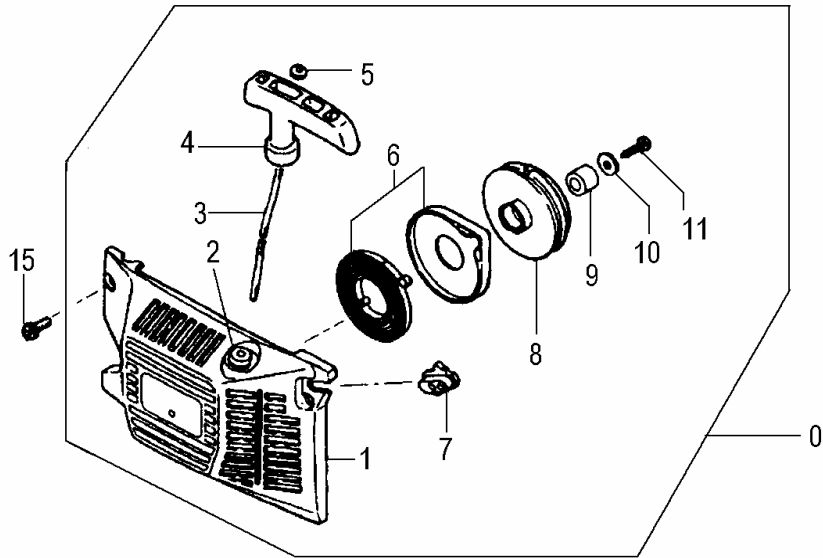
REF. NUMBER	PARTS NUMBER	DESCRIPTION	Q'TY	SERIAL NUMBER
001	562-04093-20	AIR VENT VALVE B	1	
002	567-04093-20	AIR VENT SPONGE	1	
003	680-32625-20	CLIP	1	
004	480-32625-20	OIL PIPE #	1	
005	486-32625-80	OIL FILTER BODY COMP. #	1	
006	515-32625-20	OIL PIPE A #	1	
007	689-32625-20	SPECIAL BOLT M4X14	5	
008	144-32625-90	OIL PUMP ASS'Y #	1	
009	094-32625-20	OIL SPONGE	1	
010	084-32625-20	SCREW GEAR	1	
011	276-04093-90	CLUTCH ASS'Y #	1	
012	318-32625-20	CLUTCH HOUSING #	1	
013	350-32625-20	NEEDLE BEARING #	1	
014	097-32625-20	OIL PUMP COVER #	1	
015	121-32625-20	CHAIN BAR CLAMP NUT	2	
017	329-32625-20	RIM SPROCKET #	1	
021	461-32625-20	GUIDE PLATE A #	1	
022	686-32625-20	SPECIAL SCREW M4X10	1	
030	480-32625-90	OIL PIPE ASS'Y #	1	
031	342-04093-20	CLUCH SPRING	1	
034	359-04093-20	CLUTCH WASHER B #	1	
035	467-32625-20	GUIDE	1	
041	125-32625-80	CHAIN CATCHER #	1	
042	683-32625-20	SPECIAL SCREW M5X14	1	
043	683-32625-20	SPECIAL SCREW M5X14	2	
044	460-32625-20	SPIKE #	1	
060	234-32625-20	DAMPER A #	1	
061	275-32625-20	DAMPER COLLAR A	1	
062	688-32625-20	SPECIAL SCREW M5X16	1	

C23-05 CS40EM/45EM AIR CLEANER/MUFFLER



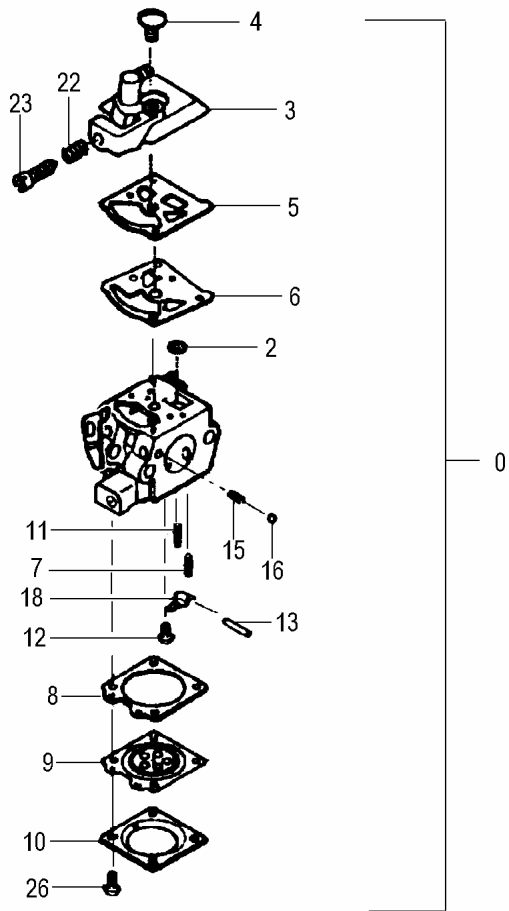
REF. NUMBER	PARTS NUMBER	DESCRIPTION	Q'TY	SERIAL NUMBER
001	133-04093-20	HEAT SHIELD #	1	
002	404-04093-80	CARB.INSULATOR COMP.	1	
004	683-32625-20	SPECIAL SCREW M5X14	2	
007	495-32625-20	ELBOW JOINT #	1	
008	425-32625-20	CLIP A	1	
009	678-32625-20	RUBBER PIPE #	1	
011	402-04093-20	CARBURETOR GASKET	1	
012	249-04093-20	SPACER #	1	
013	067-32625-20	SPRING #	1	
014	393-04093-20	INLET MANIFOLD #	1	
015	750-04093-20	MUFFLER SPCIAL BOLT #	2	
018	401-32625-20	INLET MANIFOLD RING #	1	
020	737-04093-20	MUFFLER GASKET	1	
021	704-04093-90	MUFFLER SET #	1	
022	735-04093-20	MUFFLER COVER #	1	
023	691-32625-20	SPECIAL SCREW M5X10	2	
024	726-04093-20	MUFFLER NUT	2	

C23-06 CS40EM/45EM RECOIL STARTER



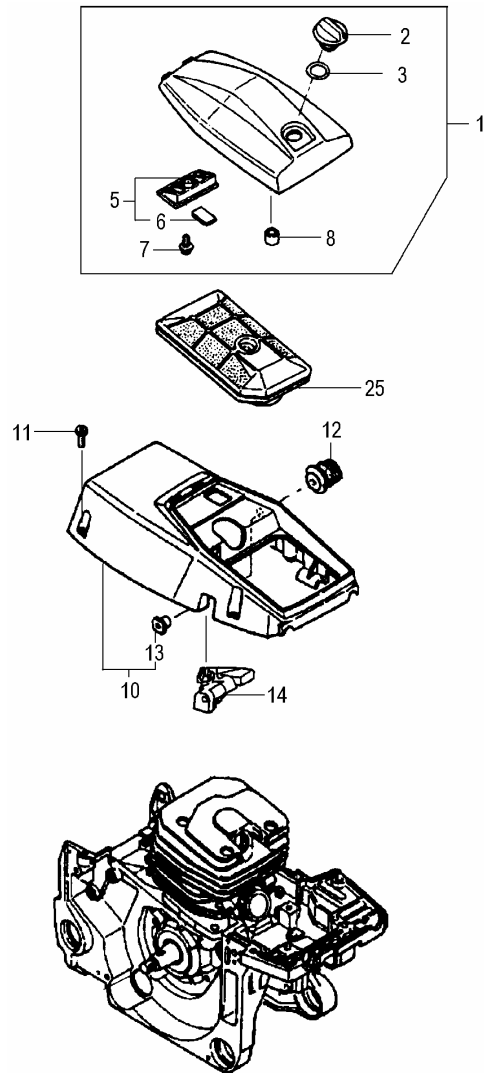
REF. NUMBER	PARTS NUMBER	DESCRIPTION	Q'TY	SERIAL NUMBER
000	756-04093-90	RECOIL STARTER ASS'Y	# 1	
001	112-04093-80	FANCASE COMP.	# 1	
002	780-04093-20	ROPE GUIDE	1	
003	783-04093-20	STARTER ROPE	# 1	
004	785-04093-20	STARTER HANDLE	# 1	
005	795-04093-20	ROPE STOPPER	1	
006	778-04093-90	RECOIL SPRING CASE ASS'Y	1	
007	193-32625-20	H.L GUIDE	# 1	
008	774-04093-20	STARTER ROPE REEL	# 1	
009	787-04093-20	STARTER BOSS	# 1	
010	786-04093-20	STARTER WASHER	1	
011	690-32625-20	SPECIAL SCREW M5X20	1	
015	683-32625-20	SPECIAL SCREW M5X14	4	

C23-07 CS40EM/45EM CARBURETOR

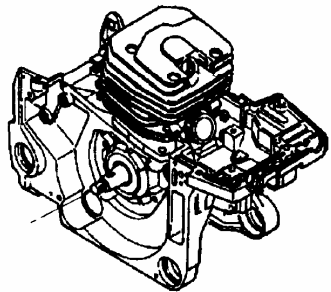
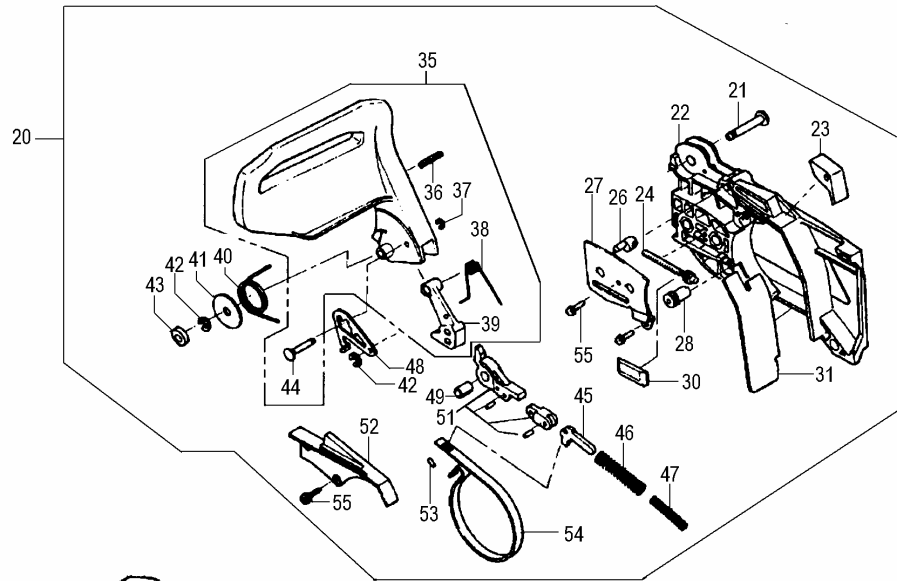


REF. NUMBER	PARTS NUMBER	DESCRIPTION	Q'TY	SERIAL NUMBER
000	455-25330-91	CARBURETOR ASS'Y	1	
002	578-25007-20	INLET SCREEN	1	
003	575-25330-80	PUMP BODY #	1	
004	514-25001-20	SET SCREW	1	
005	577-25007-20	PUMP GASKET	1	
006	576-25330-20	PUMP DIAPHRAGM #	1	
007	603-25012-20	NEEDLE VALVE #	1	
008	475-25038-20	DIAPHRAGM GASKET	1	
009	474-25001-80	METERING DIAPHRAGM COMP	1	
010	476-25004-20	DIAPHRAGM COVER	1	
011	477-25080-20	VALVE SPRING	1	
012	546-25001-20	HINGE PIN SET SCREW	1	
013	605-25001-20	HINGE PIN	1	
015	496-25032-20	CHOKE SPRING	1	
016	567-25032-20	STEEL BALL	1	
018	473-25001-20	VALVE HINGE	1	
022	463-25006-20	IDLE ADJUST SPRING	1	
023	462-25330-20	IDLE ADJUST SCREW #	1	
026	548-25012-20	SET SCREW	4	

C23-08 CS40EM/45EM CLEANER COVER

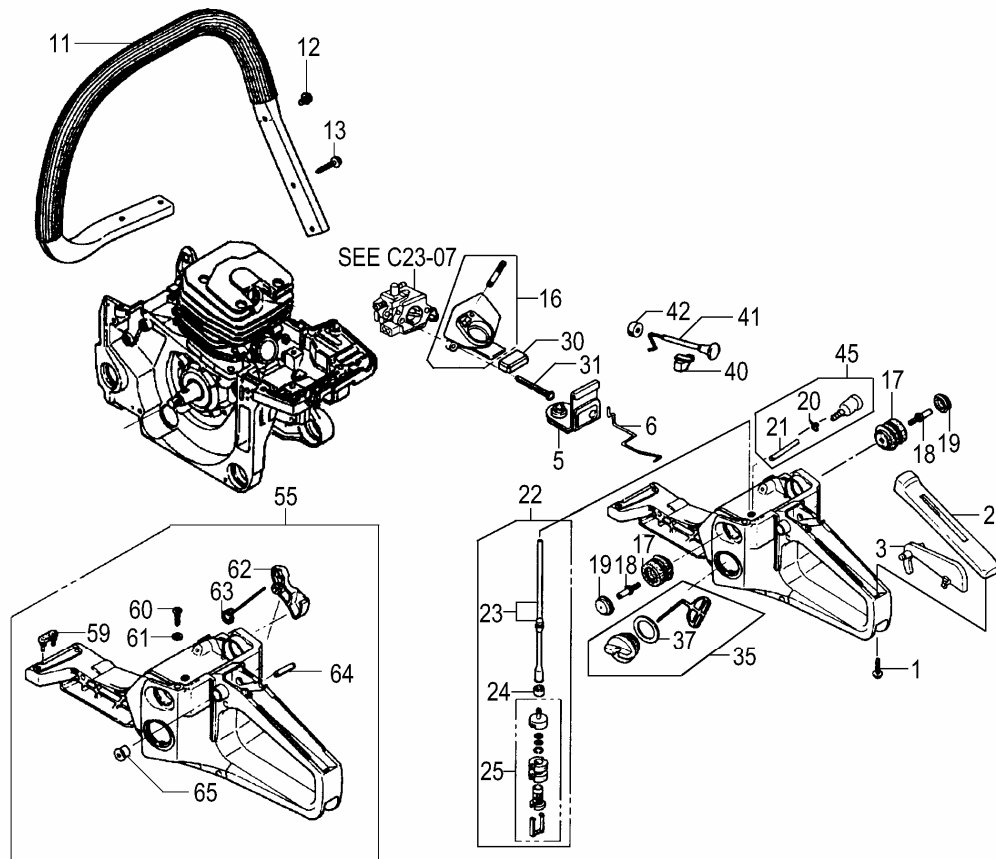


REF. NUMBER	PARTS NUMBER	DESCRIPTION	Q'TY	SERIAL NUMBER
001	452-04093-90	CLEANER COVER ASS'Y	# 1	
002	175-32625-20	CLEANER KNOB	# 1	
003	418-04093-20	CLEANER PACKING	1	
005	428-04093-80	FILTER SCREEN	# 1	
006	444-04093-20	CLEANER ELEMENT A	1	
007	993-11041-012	TAPPING SCREW 4X10	1	
008	486-04093-20	RUBBER CAP	1	
010	016-04093-90	CYLINDER COVER ASS'Y	# 1	
011	683-32625-20	SPECIAL SCREW M5X14	5	
012	213-32625-80	HANDLE DAMPER COMP.	1	
013	381-04093-20	SPECIAL NUT	# 1	
014	191-32625-20	GROMMET	1	
025	420-04093-80	CLEANER ELEMENT COMP.	1	

C23-09 CS40EM/45EM SIDE CASE/CHAIN BRAKE


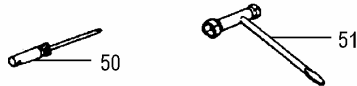
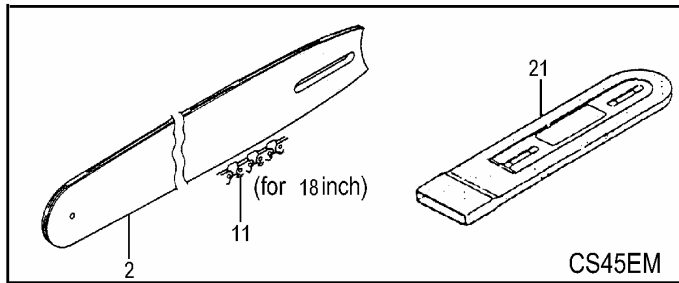
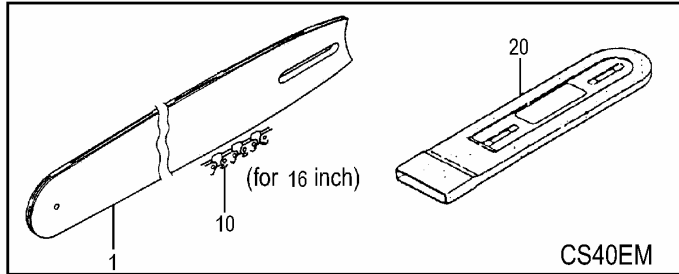
REF. NUMBER	PARTS NUMBER	DESCRIPTION	Q'TY	SERIAL NUMBER
020	040-32625-90	SIDE CASE ASS'Y #	1	
021	803-32625-20	HAND GUARD SHAFT #	1	
022	039-32625-80	SIDE CASE COMP. #	1	
023	287-32625-20	STOPPER C #	1	
024	116-32625-20	CHAIN TENSION BOLT #	1	
026	115-32625-20	TENSION ADJUSTING BOSS	1	
027	462-32625-20	GUIDE PLATE B #	1	
028	300-32625-20	GEAR #	1	
030	467-32625-20	GUIDE	1	
031	325-32625-20	CHAIN PROTECTOR #	1	
035	805-32625-90	FRONT HAND GUARD ASS'Y	1	
036	499-32626-20	SPRING PIN	1	
037	860-32625-20	STOP RING E	1	
038	809-32625-20	WEIGHT SPRING	1	
039	808-32625-20	HAND GUARD WE/GHT #	1	
040	804-32625-20	HAND GUARD SPRING #	1	
041	513-32625-20	WASHER	1	
042	859-32625-20	STOP RING E	2	
043	802-32625-20	SPACER	1	
044	811-32625-20	PIN #	1	
045	373-32625-20	BRAKE ARM #	1	
046	374-32625-20	BRAKE SPRING #	1	
047	374-32626-20	BRAKE SPRING #	1	
048	386-32625-20	BRAKE LINK SUPPORT #	1	
049	384-32625-20	COLLAR	1	
051	379-32625-80	BRAKE LINK COMP. #	1	
052	375-32625-20	BRAKE LINK COVER #	1	
053	376-32625-20	BRAKE BAND HOLDER	1	
054	378-32625-20	BRAKE BAND #	1	
055	695-32625-20	SPECIAL SCREW M4X12	5	

C23-10 CS40EM/45EM HANDLE



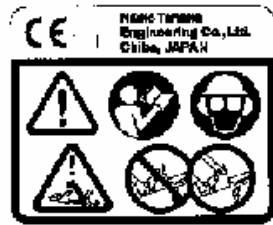
REF. NUMBER	PARTS NUMBER	DESCRIPTION	Q'TY	SERIAL NUMBER
001	687-32625-20	SPECIAL SCREW M5X19	1	
002	227-32625-20	REAR HANDLE GRIP #	1	
003	257-32625-20	SAFTY LEVER	1	
005	493-32625-20	GROMMET	1	
006	490-32625-20	THROTTLE ROD #	1	
011	209-32625-80	FRONT HANDLE COMP. #	1	
012	693-32625-20	SPECIAL BOLT	1	
013	687-32625-20	SPECIAL SCREW M5X19	1	
016	436-04093-80	AIR CLEANER BASE COMP.	1	
017	223-32625-80	REAR DAMPER COMP. #	2	
018	295-32625-20	DAMPER SET BOLT A #	2	
019	265-32625-20	DAMPER CAP B	2	
020	426-32625-20	CLIP B	1	
021	565-04093-20	AIR VENT PIPE	1	
022	699-04093-91	FUEL PIPE ASS'Y #	1	
023	702-32625-90	FUEL PIPE ASS'Y	1	
024	478-32625-20	COLLAR #	1	
025	675-04093-90	PUMP FILTER BODY ASS'Y	1	
030	599-04093-20	CUSHION RUBBER #	1	
031	692-32625-20	SPECIAL SCREW M5X52	2	
035	635-32625-90	TANK CAP ASS'Y #	1	
037	630-32625-20	TANK CAP PACKING	1	
040	715-32625-20	GUIDE	1	
041	706-32625-80	CHOKE ROD COMP.	1	
042	707-32625-21	CHOKE ROD RUBBER	1	
045	646-32625-90	AIR VENT VALVE ASS'Y #	1	
055	012-32626-90	REAR HANDLE ASS'Y	1	
059	232-32625-20	FRONT DAMPER	1	
060	694-32625-20	SPECIAL SCREW M4X16	1	
061	423-32625-20	PACKING	1	
062	060-32625-20	THROTTLE LEVER	1	
063	061-32625-20	THROTTLE LEVER SPRING	1	
064	499-32625-20	SPRING PIN	1	
065	052-32626-20	GROMMET A	1	

C23-11 CS40EM/45EM COVER/CHAIN/CHAIN BAR/TOOLS



REF. NUMBER	PARTS NUMBER	DESCRIPTION	Q'TY	SERIAL NUMBER
001	107-32625-20	CHAIN BAR 16	1	
002	105-72830-20	CHAIN BAR 18 #	1	
010	138-32625-20	BAR CHAIN 0.325 16 ,21BP-66E	1	
011	136-32578-20	BAR CHAIN 0.325 18 ,21BP-72E	1	
020	947-3281A-20	CHAIN CAOVER 16	1	
021	942-3257B-20	CHAIN COVER 450MM #	1	
050	880-32625-20	DRIVER #	1	
051	883-32625-20	COMBI.SPANNER #	1	

C23-12 CS40EM/45EM DECALS



— 2

REF. NUMBER	PARTS NUMBER	DESCRIPTION	Q'TY	SERIAL NUMBER
001	906-72832-20	NAME PLATE HITACHI	1	
002	909-32625-22	CAUTION MARK	1	
003	915-72832-20	STARTER MARK CS45EM	1	
004		STARTER MARK CS40EM	1	